

# Better Care Fund update for Health and Wellbeing Board

**April 2017**



# National context

## Admissions and delayed transfers of care

- **Accident and Emergency attendances** in 2016 have been 5% higher than in 2015.
- The number of **emergency admissions** rose by 4.5%. This rate is currently 10% higher than raw population increase.
- In 2016, each month's total admissions have been higher than the same month in each previous year.

### **Build up of pressure in the national "system"**

- 21% of patients spent more than four hours in major Accident and Emergency departments in December 2016, compared with 13% in December 2015 and 6% in December 2011.
- Long waits for emergency admission were 58% higher in 2016 than in 2015, and five times higher than 2011.

### **Emphasises the need for integrated approach to managing front and back door in acute trusts reflected in Better Care Fund targets**

- Delayed transfers of care have increased substantially over the past three years.
- There were 23% more delayed transfers of care in 2016 than in 2015.
- Compared with 2015, delays where NHS was at least partially responsible rose by 17% whereas social care delays rose by 37%.

This data shows that most of the increase nationally over the past year is because of people awaiting a care package in their own home, or awaiting nursing home placements.

**Table A: Delayed transfers of care by reason**  
Total delayed days in 2016 compared with 2015

Reason for delay	Total delayed days	Year-on-year change
Awaiting care package in own home	420,428	+45%
Awaiting further non-acute NHS care	368,562	+10%
Awaiting completion of assessment	362,162	+19%
Awaiting nursing home placement or availability	327,856	+41%
Patient or family choice	248,350	+12%
Awaiting residential home placement or availability	221,481	+21%
Awaiting public funding	78,059	+15%
Housing – patients not covered by NHS & Community Care Act	54,553	+10%
Awaiting community equipment and adaptations	51,365	+18%
Disputes	24,339	+19%

Delays in both of these categories have risen by over 40% in the last year alone, and have more than doubled over the last four years.

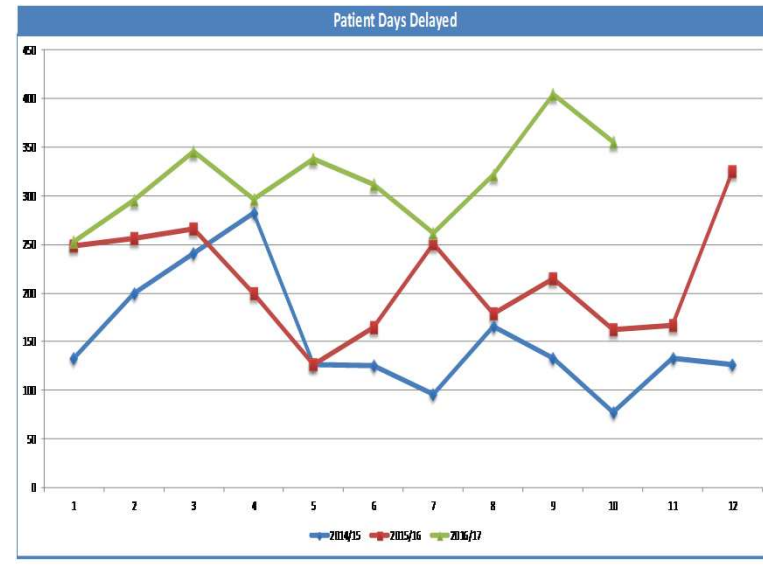
# Delayed transfers of care

Out of the 150 authorities listed in the national data to December 2016, with one being worst performer and 150<sup>th</sup> being best performer, local performance is:

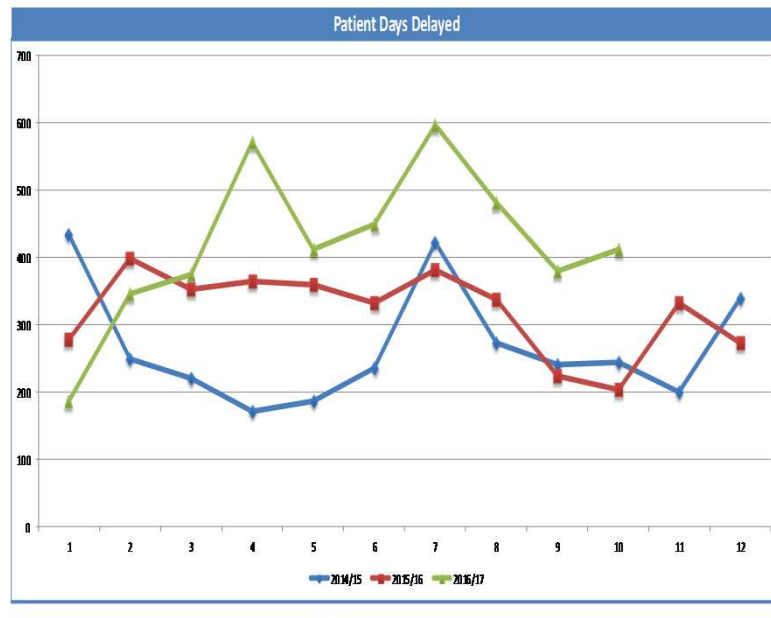
- Bracknell 76
- Windsor, Ascot and Maidenhead 101
- Slough 136
- Buckinghamshire 144

So we are not performing badly compared to national performance – but there is still at higher rate of delayed transfers of care for all East Berkshire local authorities than in previous years. There are higher trends (in green) and pace of increase is a concern.

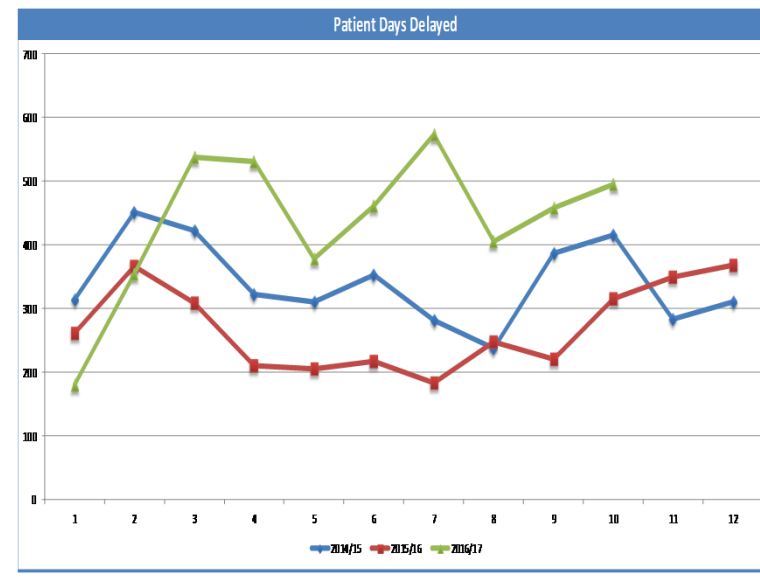
## Slough



## Bracknell



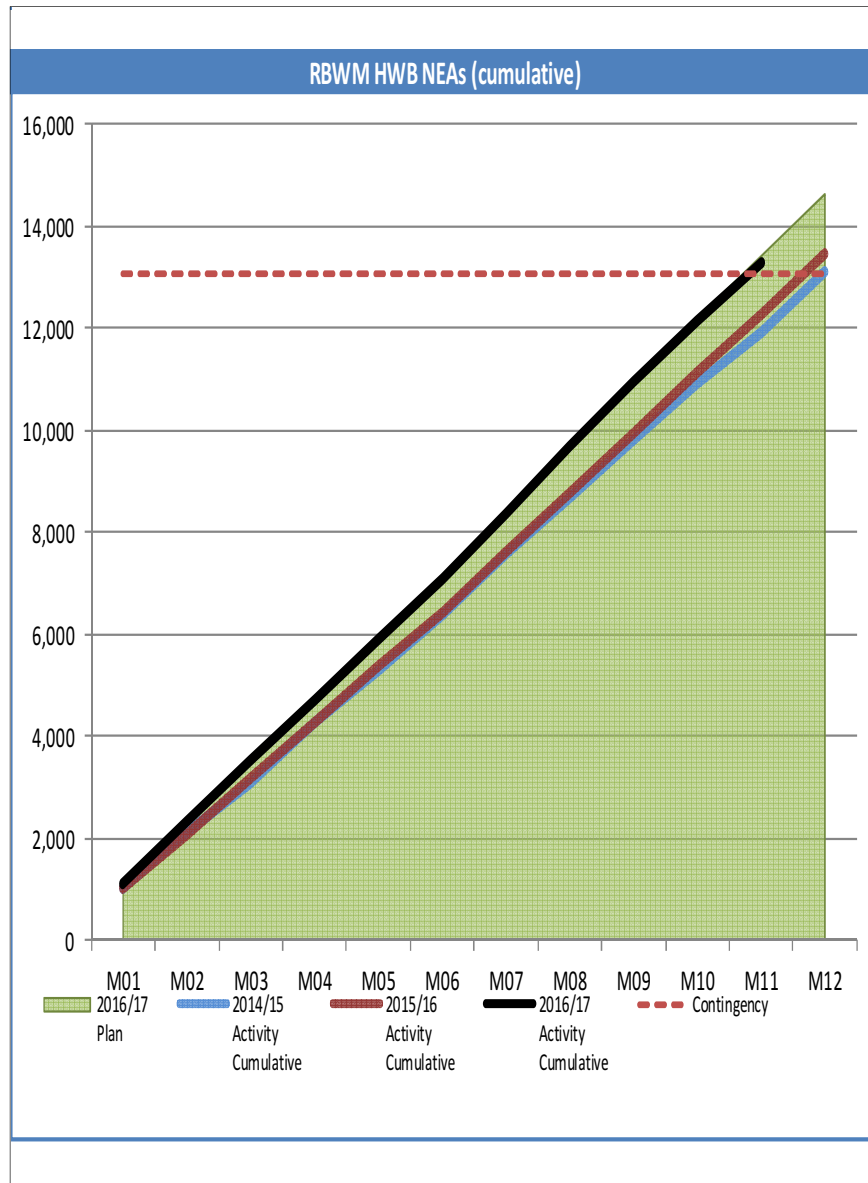
## RBWM



# Local actions to address Delayed Transfers of Care

- Integrated weekly meetings with Wexham, Royal Borough Hospital team, Short Term Support and Rehabilitation Team and Carewatch to review individual cases and agree packages of support.
- Support from GP practices to identify and support frail patients using new electronic Frailty index.
- Pilot in Old Windsor with support of parish council to identify those who live alone or are vulnerable – and offer them proactive support and advice.
- Focus on choice - proactive support for carers via SIGNAL and Dementia Advisers to enable residents to continue to live at home where possible .
- Review of third sector support from Red Cross to ensure that Royal Borough residents have access to the home from hospital service, eg milk in fridge, settling in, prescriptions etc.
- Proactive engagement with wider East Berkshire programme, including:
  - Monitoring patient flow - daily telephone calls with Wexham and partners to identify patients “fit for discharge” and use of Alamac data set.
  - Pilot of Discharge to Assess model in new Windsor Care Home for East Berkshire residents.
  - Review/mapping of service pathways between Optalis and Berkshire Healthcare Foundation Trust to meet resident needs – June 2017.

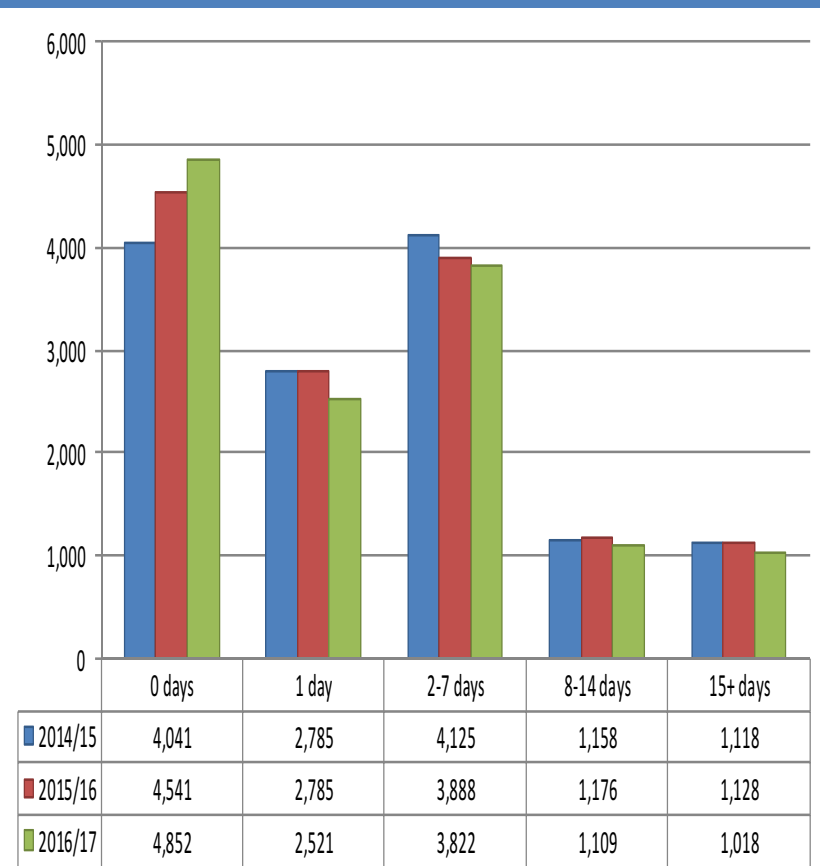
# Non-elective admissions - RBWM performance to Month 11 2016/17



No of admissions in Plan for 2016/17	14,631
Actual to Month 11	13,291
Estimated outturn for year end at average of monthly levels of admissions	14,499
WAM BCF target to achieve contingency savings	13,064
<b>Estimated over performance against contingency target (10.98% over target)</b>	<b>1435</b>

For all Windsor, Ascot and Maidenhead patients , average length of stay overall, following non-elective admission, is decreasing. Number of zero length of stay patients is increasing year on year – need to prioritise the avoidable non-elective admissions and frequent flyers.

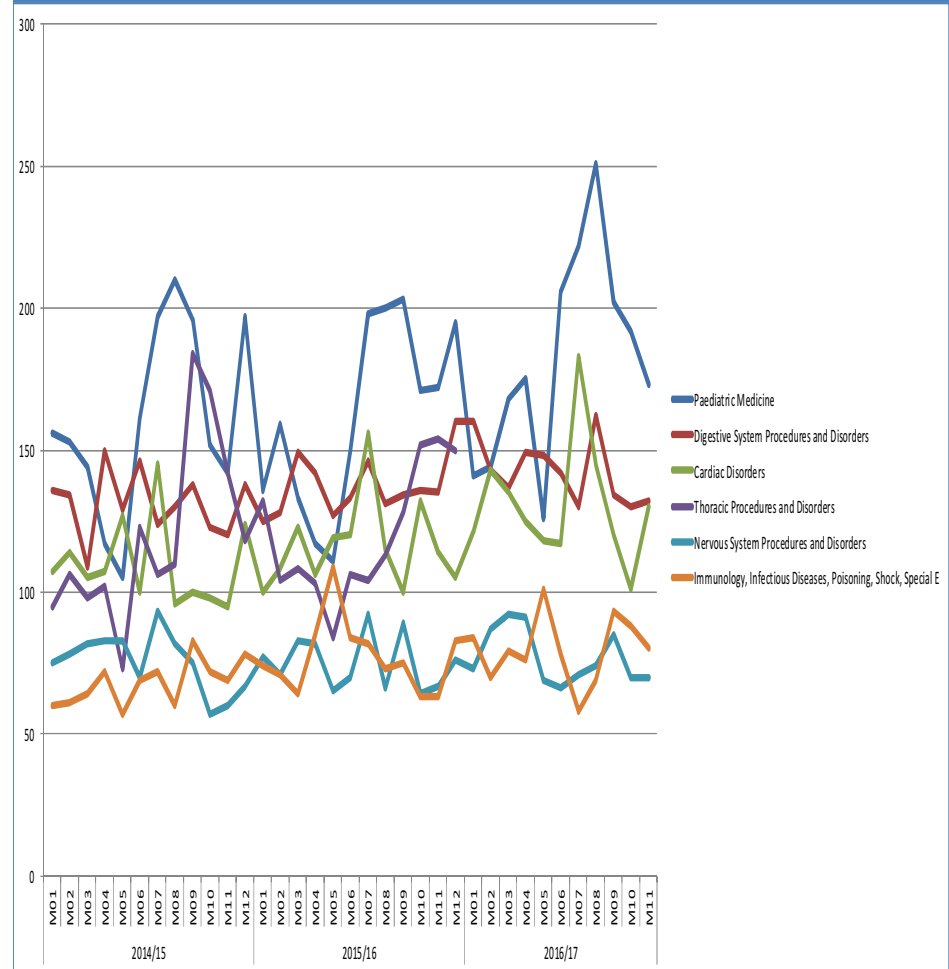
### Non-Elective Activity per Length of Stay Band



### Average Non-Elective Length of Stay per Electoral Ward

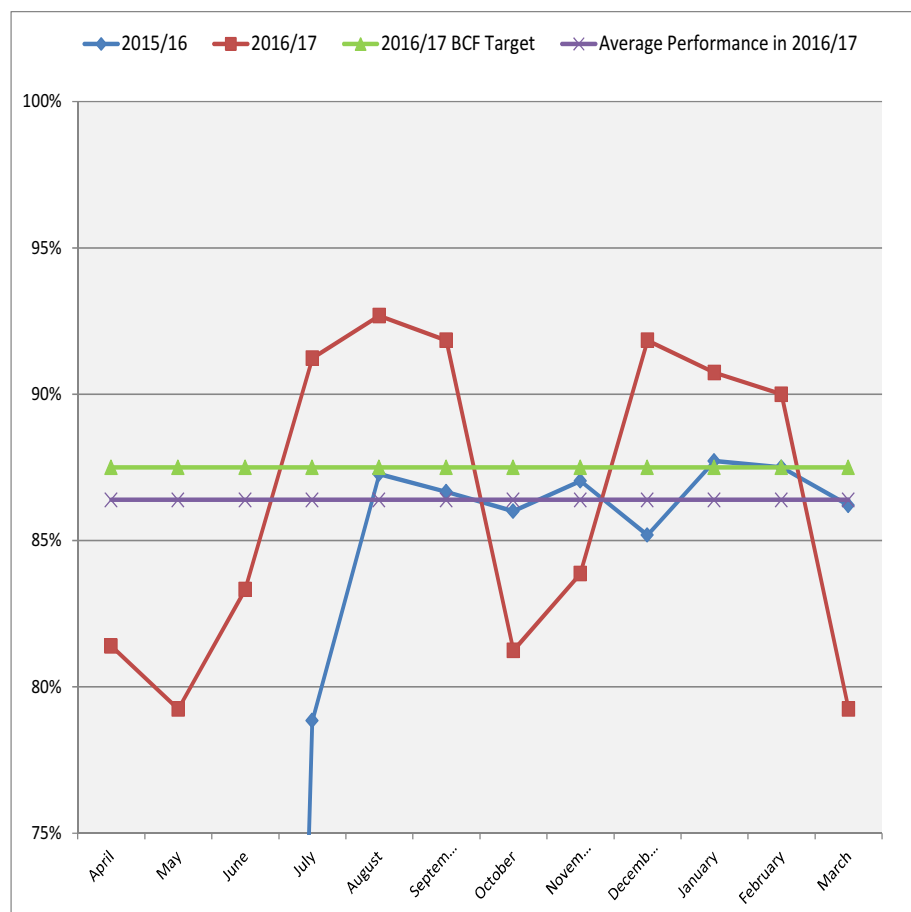
Month 11 data shows sharp downturn in paediatric admissions which is adversely affected overall local non-elective admission performance all year – A&E delivery board plans to address East Berkshire non-elective admission reduction priorities.

### Top Six Acute HRG Subchapters (LA NEAs using postcode)



## Proportion of adults (65+) who are home 91 days after discharge from hospital

The data shows the proportion of people who are at home 91 days after discharge from hospital from April 2015 onwards. This excludes those residents who have passed away. The target for the year is 87.5% and performance is currently at **87.09%**.



- Significant increase in referrals direct from acute rather than community discharges - these are often more frail residents who need more support and recovery time.
- Increase in falls related referrals and service users with long term/complex conditions .
- Slight increase in older age groups 85-94.
- More remaining in need of continuing support for longer at home due to having more complex needs and longer recovery times.



**New placements in residential and nursing homes – RBWM 2016/17 performance including data to end March 2017**

<b>Nursing &amp; Residential</b>					
2016/17	Q1	Q2	Q3	Q4	Total
<b>New placements</b>	<b>37</b>	<b>51</b>	<b>52</b>	<b>30</b>	<b>170</b>
Transfers out	-39	-44	-49	-53	-185
Net placements	-2	7	3	-23	-15

**Target for 2016/17 for new placements = 160**

**Draft figures for 2016/17 = 170**